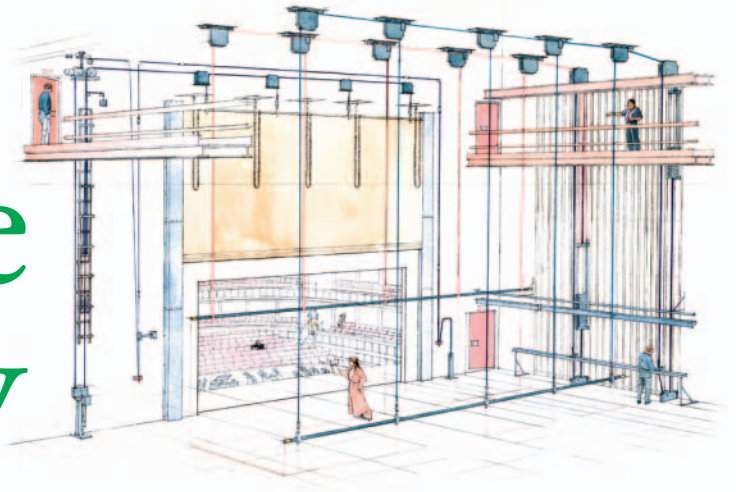


# 5 Steps to Backstage Safety



## 1 User Training

**No one should be allowed to handle any rigging equipment unless they are properly trained.** Anyone who is going to use moving equipment of any type backstage must be trained to understand the purpose of the equipment and the proper methods of operation. Operations manuals and signs on the proper use of stage rigging equipment are available from [www.jrclancy.com](http://www.jrclancy.com) (*Technical & Literature* → *Design & Operation*).

## 2 Motorized Rigging

**Winches lift the complete load simply and reliably without the need for counterbalancing the load with steel weights.** The PowerLift™ and PowerAssist™ systems are affordable motorized rigging options designed for use in schools, providing operational and safety features appropriate for student use. The movement of scenery is controlled by an automated SceneControl™ console, enabling the movements to be recorded and replayed as needed.

## 3 Loading Gallery (bridge)

**Without a loading gallery it is difficult to safely balance rigging sets.** Every counterweight system requires a loading gallery, or bridge. Loads are added to or removed from the “batten” when it is at floor level. When the batten is at floor level, the counterweight arbor is at its highest level. To balance the load on the batten, weight is added to or removed from the counterweight arbor. In order to do this, there must be a loading gallery.

## 4 SureLock™ Rope Lock

**If a set is out of balance, the SureLock cannot be opened, preventing “runaway” rigging sets.** The SureLock rope lock incorporates a load sensing mechanism, and can tell if a counterweight set is more than 50 lbs. out of balance. **However, using a SureLock will not solve the problems created by the lack of a loading gallery.**

## 5 Annual Inspection

**Your stage rigging system should be inspected annually by a rigging specialist.** We suggest rigging dealers who are members of the “Entertainment Services & Technology Association” (ESTA). This is a non-profit trade association whose members meet membership requirements and subscribe to a Code of Conduct.

**For more information about stage rigging safety and the name of an Authorized Clancy dealer near you, contact J.R. Clancy at 800-836-1885 or visit us at [www.jrclancy.com](http://www.jrclancy.com).**



Design, Manufacture and Installation  
of Theatrical Equipment Worldwide

7041 Interstate Island Road ■ Syracuse, NY USA 13209  
Fax: (315) 451-1766 ■ (315) 451-3440 ■ 1-800-836-1885  
[rigging@jrclancy.com](mailto:rigging@jrclancy.com) ■ [www.jrclancy.com](http://www.jrclancy.com)

