



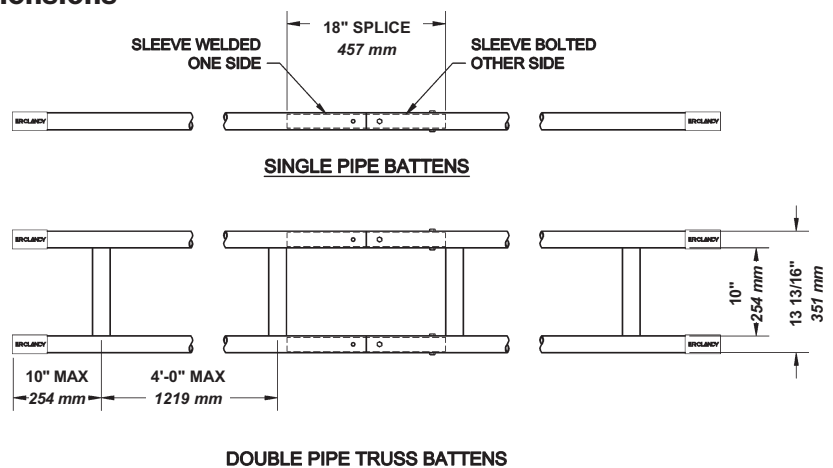
Batten 015-67R

- Battens are made from seamless pipe and are supplied with a matte black finish.
- Battens up to 21' (6.4 m) long are supplied as a single piece; longer battens are provided with 18" (457 mm) long internal splice sleeves.
- Standard 1 1/2" (38 mm) battens are provided with safety yellow vinyl end caps, making the batten ends easier to see.
- Two pipe ladder trusses are constructed from two 1 1/2" (38 mm) sch 40 pipes with flat bar spacers on 4' (1.219 m) centers. Other special constructions are available, consult factory.

Ordering Information

Product Code	Description	I.D.	O.D.	Wt
015-67R	1 1/2" (38 mm) Sch 40 batten	1.610" 40.9 mm	1.900" 48.26 mm	3 lbs./ft. 4.45 kg/m
015-67H	1 1/2" (38 mm) Sch 80 batten	1.500" 38 mm	1.900" 48.26 mm	4 lbs./ft. 5.9 kg/m
015-68R	2" (51 mm) Sch 40 batten	2.067" 52.5 mm	2.375" 60.325 mm	4 lbs./ft. 5.9 kg/m
015-69R	2 1/2" (64 mm) Sch 40 batten	2.469" 62.7 mm	2.875" 73.025 mm	6 lbs./ft. 8.9 kg/m
015-67T	Two pipe truss batten	1.610" 40.9 mm	1.900" 48.26 mm	7 lbs./ft. 10.4 kg/m
015-67S	1 1/2" (38 mm) Batten sleeve, no holes, 18" long (457 mm)	-	-	3 lbs. 1.3 kg
015-68S	2" (51 mm) Batten sleeve, no holes, 18" long (457 mm)	-	-	4 lbs. 1.8 kg
015-69S	2 1/2" (64 mm) Batten sleeve, no holes, 18" long (457 mm)	-	-	9 lbs. 4 kg
099-BATCAP	Yellow batten end caps, 4" (102 mm) long	-	-	0.1 lb. 0.04 kg

Dimensions





Half Pipe Clamp
026-21X1.5



Full Pipe Clamp
026-22X1.5

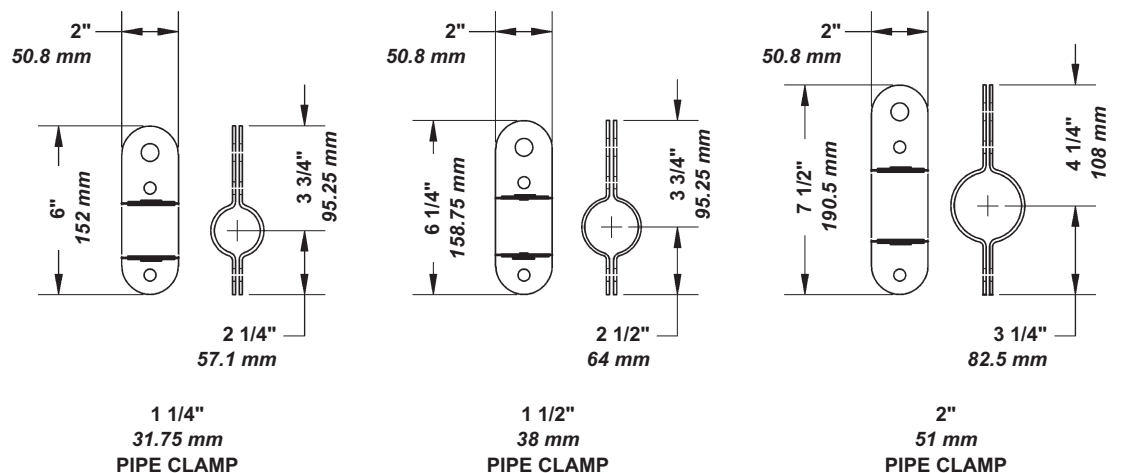
- Steel clamps with black powder-coat finish.
- Full clamps have rounded corners.
- Supplied with $\frac{3}{8}$ " x 1" (9.5 mm x 25.4 mm) hex bolts with lock nuts, and a $\frac{5}{8}$ " (15.875 mm) hole for attachment of cable, chain, or other fittings.
- Half clamps are $\frac{1}{8}$ " (3.175 mm) steel, full clamps are 12 gauge (2.65 mm) steel.

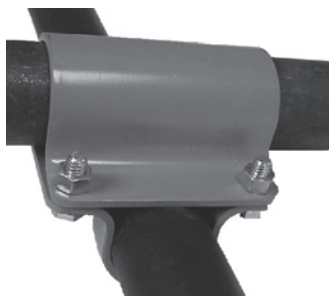
Ordering Information

Product Code	Description	RWL	Wt.
Half Clamps			
026-21X1.5	For 1½" (38 mm) pipe	200 lbs. 90.7 kg	1.5 lbs. 0.68 kg
026-21X2.0	For 2" (51 mm) pipe	200 lbs. 90.7 kg	1.5 lbs. 0.68 kg
Full Clamps			
026-22X1.2	For 1¼" (31.75 mm) pipe	750 lbs. 340 kg	1 lb. 0.45 kg
026-22X1.5	For 1½" (38 mm) pipe	750 lbs. 340 kg	1 lb. 0.45 kg
026-22X2.0	For 2" (51 mm) pipe	750 lbs. 340 kg	1 lb. 0.45 kg
026-22X2.5	For 2½" (64 mm) pipe	750 lbs. 340 kg	1.5 lbs. 0.68 kg

RWL: RWL is maximum load that can be applied to the pipe clamp which is in "like new" condition and has been properly installed, maintained, and operated.

Dimensions





Cross Grid Connector
015-100

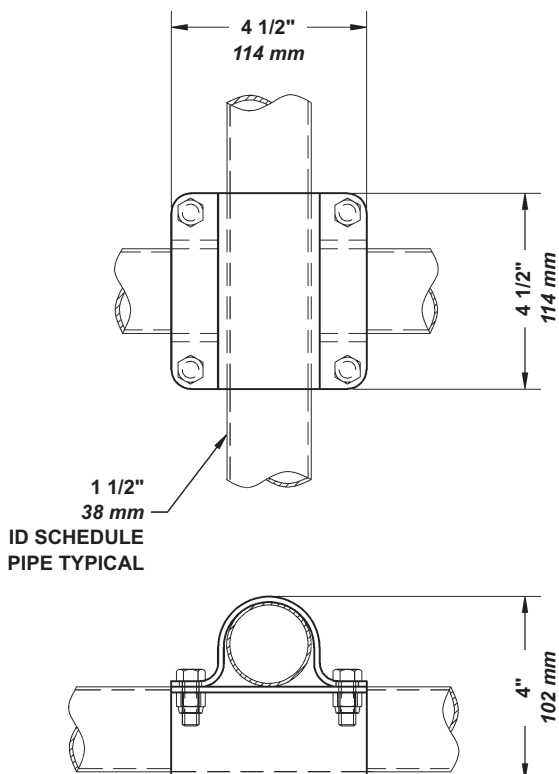
- Provides rigid, low-profile connections for assembling pipe grids of 1 1/2" (38 mm) schedule 40 pipe.
- Black, powder-coated 1/8" (3.175 mm) steel plates are supplied with 3/8" (9.5 mm) black Grade 5 bolts and nuts.
- Pipes can be added or removed in place, without sliding them in from the ends.
- Half of the assembly can also be used to secure a 1 1/2" (38 mm) schedule 40 pipe to any flat surface.

Ordering Information

Product Code	Description	RWL	Wt.
015-100	Cross Grid Connector	1500 lbs. 680 kg	2 lbs. 0.9 kg

RWL: RWL is maximum load that can be applied to the cross grid connector which is in "like new" condition and has been properly installed, maintained, and operated.

Dimensions



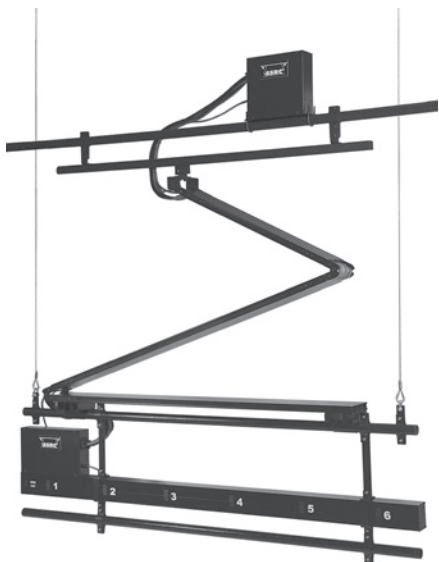


Double Cable Cradle
015-295D

- Cable cradles are used to raise a loop of electrical cable that feeds lighting circuits on a batten using a wire lift line.
- Cables can be up to 2" (50.8 mm) in diameter.
- Double purchase cable cradles rise half the distance as the lifting cable.

Ordering Information

Product Code	Description	Wt.
015-295	Cable Cradle	3.7 lbs. 1.68 kg
015-295D	Double Cable Cradle	9 lbs. 4 kg
015-295DP	Double Purchase Cable Cradle	24 lbs. 10.9 kg



Cable Pantograph

- Cable management and electrical distribution for theatrical and studio lighting, front-of-house lighting, audience chamber lighting, and other architectural/industrial applications.
- The pantograph cable management system provides an efficient means of maintaining control over power and data wiring for rigging sets. It prevents tangling and cable crimping and provides a clean look to the assembly.
- They can be mounted to the gridiron or overhead structure.

Key Features

- For use with fixed speed motorized rigging hoists up to 20 fpm (*0.1 m/s*).
- Black, extruded aluminum cable housing.
- System utilizes flat multi-cables for various circuit configurations.
- Attaches to upper rigging pipe batten between lift lines.
- A horizontal stabilization track is supplied for the upper connection.
- Extruded aluminum connector strips have interlocking cover sections. Flush receptacles or 18" (*457 mm*) pigtail mounted connectors are available. Pre-wired with 257°F (*125°C*) XLP high temperature wire to molded barrier terminal blocks.
- UL listed.
- Black extruded aluminum cable housing, custom colors available.

Ordering Information

We're pleased to provide you with quotes for pantographs. Please provide the following information:

- Type of rigging
- Number and size of conductors
- Length of extra wire for top and bottom connections
- Attachment height of horizontal stabilization track
- Amount of vertical travel required
- Distance between pickup line
- Amount of top storage space



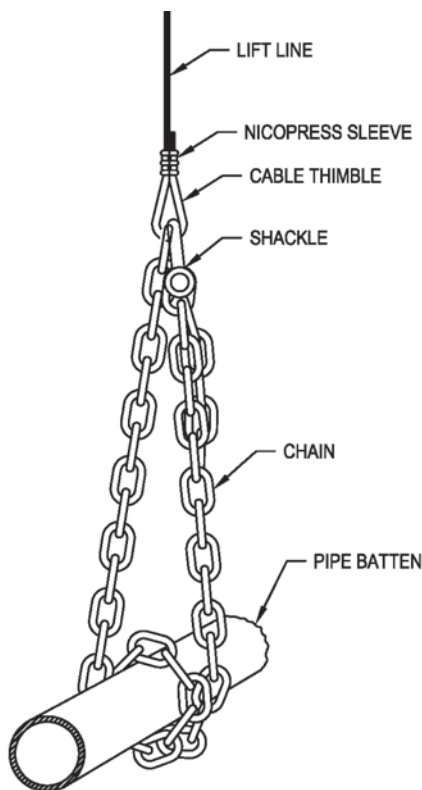
AlphaChain
022-250TC

AlphaChain

- 7 mm (0.275") black alloy chain for rigging.
- Black chain eliminates glare and reflection.
- Grade 63 hardened alloy chain meeting OSHA requirements for sling usage OSHA 1910.184(e)(5).
- Used with standard 1/4" (6.35 mm) hardware.
- Marked with JRC on every link.
- Date code on every 10th link for traceability.
- 3,250 lb. (1,474 kg) working loading limit based on the manufacturer's 4:1 safety factor.

Trim Chain

- Most popular and economical lift line termination.
- 36" (914 mm) long, 7 mm (0.275") Grade 63 alloy chain, with a forged round pin anchor shackle, and thimble.
- The chain is wrapped one and one half turns around the batten and attached back to the thimble at the end of the lift line with a forged shackle. Adjustment is made by connecting the shackle into a link along the return side of the chain.



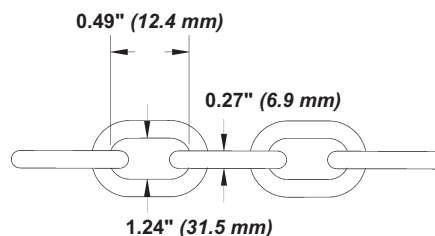
Trim Chain
015-1192B

Ordering Information

Product Code	Description	RWL	Wt.
022-250TC	AlphaChain 7 mm (0.275") Grade 63 Alloy Chain	3250 lbs. 1474 kg	0.7 lb. 0.32 kg
015-1191B	Black Trim Chain with 5/16" (7.9 mm) Shackle, 1/4" (6.35 mm) Thimble	3250 lbs. 1474 kg	2 lbs. 0.9 kg
015-1192B	Black Trim Chain with 1/4" (6.35 mm) Shackle, 1/4" (6.35 mm) Thimble	3250 lbs. 1474 kg	2 lbs. 0.9 kg
015-1193B	Black Trim Chain with 1/4" (6.35 mm) Shackle, 3/16" (4.76 mm) Thimble	3250 lbs. 1474 kg	2 lbs. 0.9 kg

RWL: RWL is maximum load that can be applied to the trim chain which is in "like new" condition and has been properly installed, maintained, and operated.

Dimensions



#022-250TC



Chain
022-250

Grade 30 Chain

- Grade 30 Proof coil chain for dead hanging.
- Zinc plated.
- Manufactured to Federal Specification RRC-271-E.
- Working loading limit based on the manufacturer’s 4:1 safety factor.

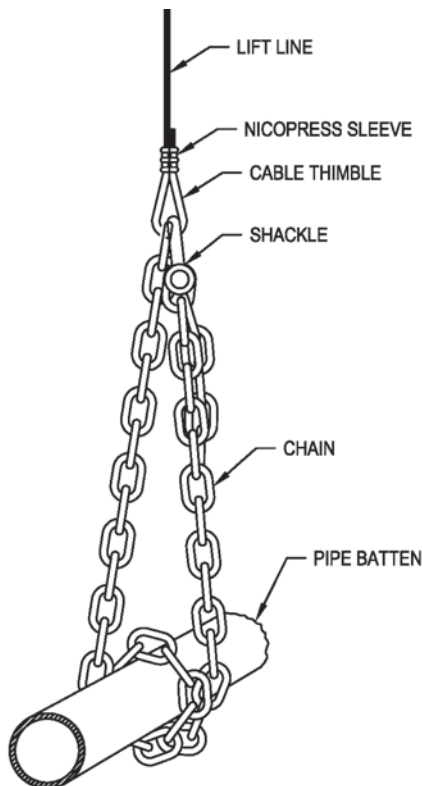
Grade 30 Trim Chain

- Most popular and economical lift line termination.
- 36" (914 mm) long, 1/4" (6.35 mm) Grade 30 proof coil chain, with a forged round pin anchor shackle, and thimble.
- The chain is wrapped one and one half turns around the batten and attached back to the thimble at the end of the lift line with a forged shackle. Adjustment is made by connecting the shackle into a link along the return side of the chain.

Ordering Information

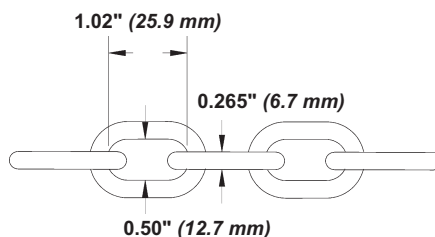
Product Code	Description	RWL	Wt.
022-250	1/4" (6.35 mm) Proof Coil Chain	1250 lbs. 567 kg	0.7 lb./ft. 0.32 kg/m
022-375	3/8" (9.5 mm) Proof Coil Chain	2650 lbs. 1202 kg	1.5 lbs./ft. 0.68 kg/m
015-1191	Trim Chain with 5/16" (7.9 mm) Shackle, 1/4" Thimble (6.35 mm)	750 lbs. 340 kg	2 lbs. 0.9 kg
015-1192	Trim Chain with 1/4" (6.35 mm) Shackle, 1/4" Thimble (6.35 mm)	750 lbs. 340 kg	2 lbs. 0.9 kg
015-1193	Trim Chain with 1/4" (6.35 mm) Shackle, 3/16" Thimble (4.76 mm)	750 lbs. 340 kg	2 lbs. 0.9 kg

RWL: RWL is maximum load that can be applied to the trim chain which is in "like new" condition and has been properly installed, maintained, and operated.

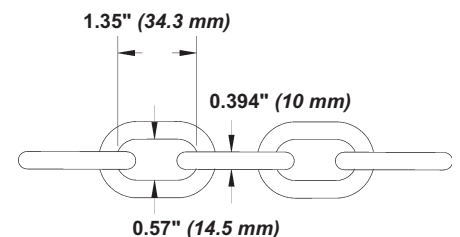


Trim Chain
015-1192

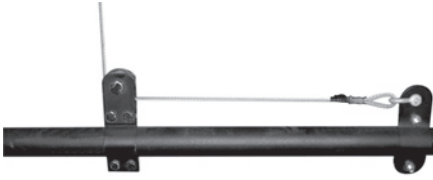
Dimensions



#022-250



#022-375



Batten Trim Clamp
026-23x1.5

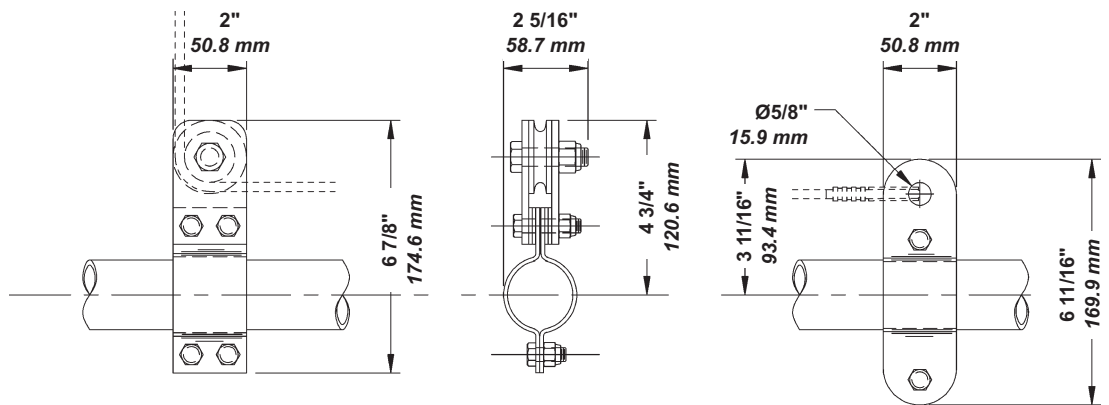
- Allows quick trim adjustment with the least reduction in travel distance.
- Fixed clamp with diverter is located at the lift line. Movable clamp is used to adjust batten height.
- For use with 1 1/2" (38 mm) battens only.

Ordering Information

Product Code	Description	RWL	Wt.
026-23x1.5	Batten Trim Clamp	700 lbs. 317.5 kg	2.5 lbs. 1.1 kg

RWL: RWL is maximum load that can be applied to the batten trim clamp which is in "like new" condition and has been properly installed, maintained, and operated.

Dimensions





**Turnbuckle
032-221J&E**

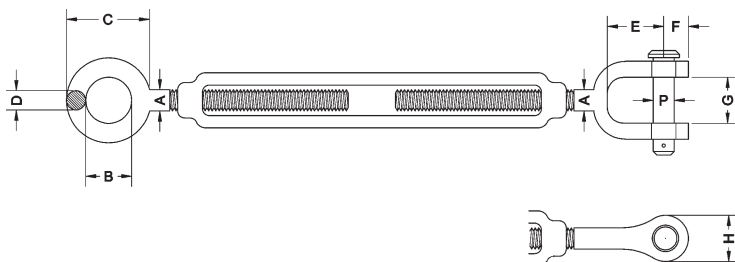
- Used for batten trimming or tensioning lines.
- Drop forged turnbuckles meeting the requirements of ASTM F1145-92, Type 1, Grade 1, made in the U.S.
- Hot galvanized finish.
- Other types and sizes are available on special order.

Ordering Information

Product Code	Description	RWL	Wt.
032-220J&E	5/16" x 4 1/2" (7.9 mm x 114 mm) Jaw & Eye Turnbuckle	800 lbs. 362 kg	0.5 lb. 0.2 kg
032-221J&E	3/8" x 6" (9.5 mm x 152 mm) Jaw & Eye Turnbuckle	1200 lbs. 544 kg	1 lb. 0.45 kg
032-221J&J	3/8" x 6" (9.5 mm x 152 mm) Jaw & Jaw Turnbuckle	1200 lbs. 544 kg	1 lb. 0.45 kg
032-222J&E	1/2" x 6" (12.7 mm x 152 mm) Jaw & Eye Turnbuckle	2200 lbs. 1000 kg	2 lbs. 0.9 kg
032-223J&E	1/2" x 12" (12.7 mm x 305 mm) Jaw & Eye Turnbuckle	2200 lbs. 1000 kg	2.5 lbs. 1.13 kg
032-224J&E	5/8" x 6" (15.875 mm x 152 mm) Jaw & Eye Turnbuckle	3500 lbs. 1587 kg	2.6 lbs. 1.18 kg

RWL is based on the manufacturer's 5:1 safety factor.

Dimensions



Product Code	A	B	C	D	E	F	G	H	P	Closed Length
032-220J&E	5/16" 7.9 mm	5/8" 15.875 mm	1 1/4" 31.75 mm	9/32" 7.1 mm	7/8" 22.22 mm	5/16" 7.9 mm	15/32" 11.9 mm	5/8" 15.87 mm	1/4" 6.35 mm	9 1/8" 232 mm
032-221J&E	3/8" 9.5 mm	3/4" 19 mm	1 1/2" 38 mm	11/32" 8.7 mm	1" 25.4 mm	13/32" 10.31 mm	1/2" 12.7 mm	13/16" 20.6 mm	5/16" 7.9 mm	11 1/2" 292 mm
032-221J&J	3/8" 9.5 mm	-	-	-	1" 25.4 mm	13/32" 10.31 mm	1/2" 12.7 mm	13/16" 20.6 mm	5/16" 7.9 mm	11 1/2" 292 mm
032-222J&E	1/2" 12.7 mm	1" 25.4 mm	2" 50.8 mm	7/16" 11.1 mm	1 9/32" 32.5 mm	1/2" 12.7 mm	5/8" 15.87 mm	1" 25.4 mm	7/16" 11.1 mm	13 1/4" 337 mm
032-223J&E	1/2" 12.7 mm	1" 25.4 mm	2" 50.8 mm	7/16" 11.1 mm	1 9/32" 32.5 mm	1/2" 12.7 mm	5/8" 15.87 mm	1" 25.4 mm	7/16" 11.1 mm	19 1/4" 489 mm
032-224J&E	5/8" 15.875 mm	1 1/4" 31.75 mm	2 5/16" 58.73 mm	17/32" 13.5 mm	1 21/32" 42 mm	21/32" 16.67 mm	7/8" 22.32 mm	1 5/16" 33 mm	1/2" 12.7 mm	14 5/8" 371 mm



Beam Clamp
015-798

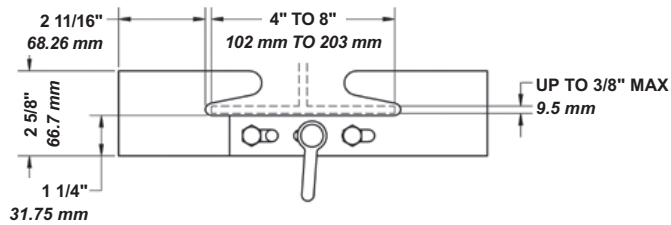
- Used for attaching chains or lines to beams for dead hanging or guide wires.
- Includes two $\frac{3}{8}$ " x 1" (9.5 mm x 25.4 mm) Grade 5 hex bolts with lock nuts, and a $\frac{1}{4}$ " (6.35 mm) round pin anchor shackle.

Ordering Information

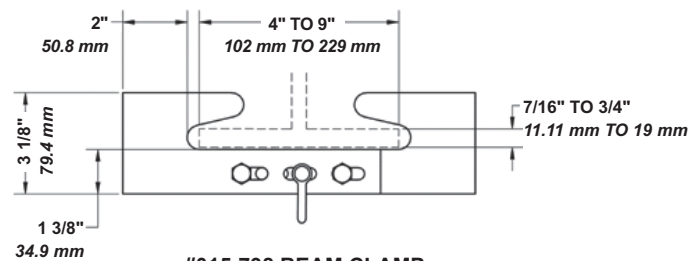
Product Code	Description	RWL	Wt.
015-698	$\frac{3}{8}$ " (9.5 mm) Throat, will grip flanges from 4" to 8" (102 mm to 203 mm)	350 lbs. 159 kg	2 lbs. 0.9 kg
015-798	$\frac{3}{4}$ " (19 mm) Throat, will grip flanges from 4" to 9" (102 mm to 229 mm)	350 lbs. 159 kg	2 lbs. 0.9 kg

RWL: RWL is maximum load that can be applied to the beam clamp which is in "like new" condition and has been properly installed, maintained, and operated.

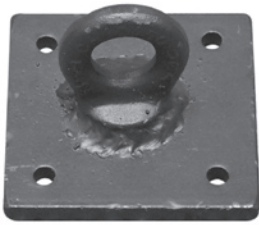
Dimensions



#015-698 BEAM CLAMP



#015-798 BEAM CLAMP



Floor Plate
016-97

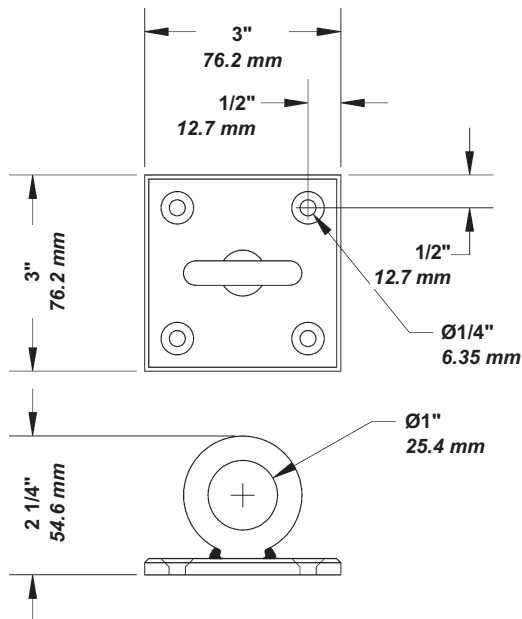
- Used for terminating guide lines.
- 3" x 3" (76.2 mm x 76.2 mm) square, steel floor plate with forged eye.

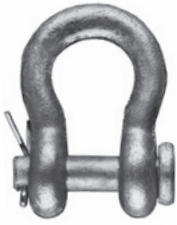
Ordering Information

Product Code	Description	RWL	Wt.
016-97	Floor Plate	450 lbs. 204 kg	0.8 lb. 0.36 kg

RWL: RWL is maximum load that can be applied to the floor plate which is in "like new" condition and has been properly installed, maintained, and operated.

Dimensions





Round Pin, Anchor Shackle
019-A375R

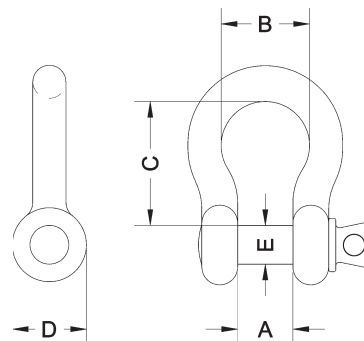
- Drop forged anchor shackles meet the performance requirement of Federal Specification RR-C-271D type IVA.
- Shackles have a hot galvanized finish.

Ordering Information

Product Code	Description	RWL	Wt.
Round Pin Shackles			
019-A187R	$\frac{3}{16}$ " (4.76 mm) Round Pin Forged Anchor Shackle	666 lbs. 302 kg	0.07 lb. 0.03 kg
019-A250R	$\frac{1}{4}$ " (6.35 mm) Round Pin Forged Anchor Shackle	1000 lbs. 454 kg	0.14 lb. 0.06 kg
019-A312R	$\frac{5}{16}$ " (7.9 mm) Round Pin Forged Anchor Shackle	1500 lbs. 680 kg	0.22 lb. 0.09 kg
019-A375R	$\frac{3}{8}$ " (9.5 mm) Round Pin Forged Anchor Shackle	2000 lbs. 907 kg	0.33 lb. 0.15 kg
Screw Pin Shackles			
019-A187S	$\frac{3}{16}$ " (4.76 mm) Screw Pin Forged Anchor Shackle	666 lbs. 302 kg	0.07 lb. 0.03 kg
019-A250S	$\frac{1}{4}$ " (6.35 mm) Screw Pin Forged Anchor Shackle	1000 lbs. 454 kg	0.14 lb. 0.06 kg
019-A312S	$\frac{5}{16}$ " (7.9 mm) Screw Pin Forged Anchor Shackle	1500 lbs. 680 kg	0.22 lb. 0.09 kg
019-A375S	$\frac{3}{8}$ " (9.5 mm) Screw Pin Forged Anchor Shackle	2000 lbs. 907 kg	0.33 lb. 0.15 kg

RWL is based on the manufacturer's 6:1 safety factor.

Dimensions



Product Code	A	B	C	D	E
019-A187	$\frac{3}{16}$ " 4.76 mm	$\frac{9}{16}$ " 14.3 mm	$\frac{7}{8}$ " 22.2 mm	$\frac{5}{8}$ " 15.8 mm	$\frac{1}{4}$ " 6.35 mm
019-A250	$\frac{15}{32}$ " 11.9 mm	$\frac{3}{4}$ " 19 mm	$1\frac{1}{8}$ " 28.5 mm	$\frac{3}{4}$ " 19 mm	$\frac{5}{16}$ " 7.9 mm
019-A312	$\frac{17}{32}$ " 13.5 mm	$\frac{15}{16}$ " 23.8 mm	$1\frac{1}{4}$ " 31.75 mm	$\frac{7}{8}$ " 22.2 mm	$\frac{3}{8}$ " 9.5 mm
019-A375	$\frac{21}{32}$ " 16.67 mm	$1\frac{1}{8}$ " 28.5 mm	$1\frac{7}{16}$ " 36.5 mm	1" 25.4 mm	$\frac{7}{16}$ " 11.1 mm



Guided Cable Clew
015-27X8

- Allows one or two drive lines to connect to up to 8 lift lines.
- $\frac{5}{16}$ " (7.9 mm) thick steel plate with holes for cable and drive lines, plus two guide spools.
- The design permits the use of lines on tight centers such as are found near multi-groove sheaves.

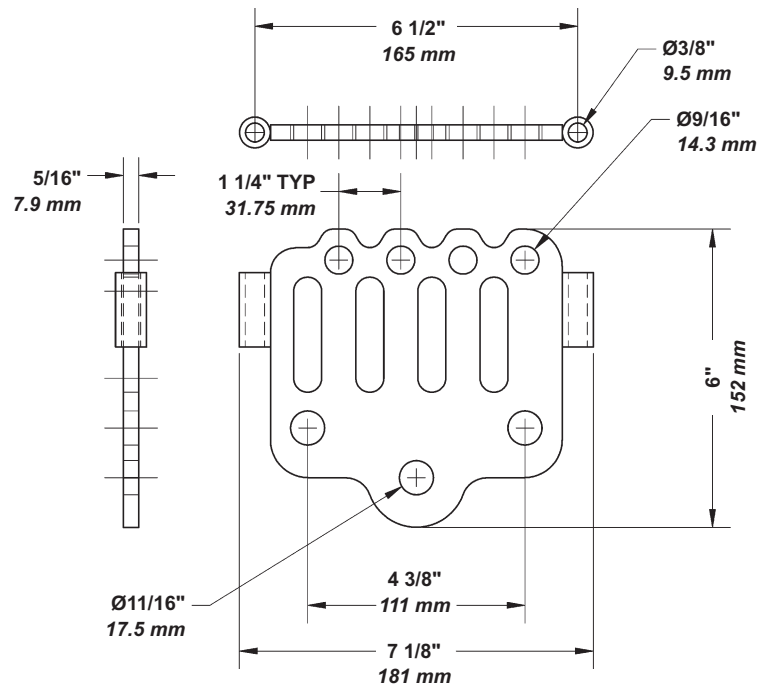
Ordering Information

Product Code	Description	RWL	Wt.
015-27X8	8 Line Guided Cable Clew	*	5 lbs. 2.26 kg

*RWL IS 1500 LBS. (680 kg) WITH A SINGLE DRIVE LINE, OR 2500 LBS. (1134 kg) WITH TWO DRIVE LINES.

RWL: RWL is maximum load that can be applied to the guided cable clew which is in "like new" condition and has been properly installed, maintained, and operated.

Dimensions





Galvanized Utility Cable
020-125

- 7 x 19 Galvanized Utility Cable is used for lift lines, guide wires, and other applications requiring an economical wire rope with good strength and flexibility.
- Manufactured to Federal Specification RRW-410E.
- Test certificates are available at extra cost.
- Sold in 2500' (762 m) rolls.
- Other types of wire rope are available for special applications.

Ordering Information

Product Code	Description	RWL	Wt.
2,500' (762 m) Rolls, wt. per foot (meter)			
020-125	1/8" (3.175 mm) Galvanized Utility Cable	250 lbs. 113 kg	0.03 lb. 0.01 kg
020-187	3/16" (4.76 mm) Galvanized Utility Cable	537 lbs. 243 kg	0.07 lb. 0.03 kg
020-250	1/4" (6.35 mm) Galvanized Utility Cable	875 lbs. 397 kg	0.11 lb. 0.05 kg
020-312	5/16" (7.9 mm) Galvanized Utility Cable	1225 lbs. 556 kg	0.18 lb. 0.08 kg
020-375	3/8" (9.5 mm) Galvanized Utility Cable	1800 lbs. 816 kg	0.25 lb. 0.11 kg
500' (152.4 m) Convenience Rolls, wt. per roll			
020-125-5	1/8" (3.175 mm) Galvanized Utility Cable	250 lbs. 113 kg	15 lbs. 6.8 kg
020-375-5	3/8" (9.5 mm) Galvanized Utility Cable	1800 lbs. 816 kg	90 lbs. 40.8 kg

RWL is based on an 8:1 safety factor.



Nicopress (Oval Sleeve)
025-250N



Nicopress (Stop Sleeve)
025-250S

- Copper oval sleeves are used with a thimble for cable terminations.
- Oval sleeves used with galvanized utility cable have an efficiency rating of 100% of the catalog breaking strength of the galvanized utility cable.
- Copper stop sleeves are used on cable ends inside drums, etc. The efficiency of these connections must be determined by testing.
- Nicopress sleeves must be installed using the proper Nicopress hand or hydraulic tool.
- Crimps must be verified with the appropriate Nicopress “Go Gauge”.
- Nicopress fittings may only be used with Nicopress tools and “Go Gauges”. Do not mix manufacturers.

Ordering Information

Product Code	Description	Wt.
Copper Oval Sleeves		
025-125N	1/8" (3.175 mm), Oval Sleeve, 18-3-M	0.05 lb. 0.02 kg
025-187N	3/16" (4.76 mm), Oval Sleeve, 18-6-X	0.05 lb. 0.02 kg
025-250N	1/4" (6.35 mm), Oval Sleeve, 18-10-F6	0.08 lb. 0.04 kg
025-312N	5/16" (7.9 mm), Oval Sleeve, 18-13-G9	0.12 lb. 0.05 kg
025-375N	3/8" (9.5 mm), Oval Sleeve, 18-23-H5	0.15 lb. 0.06 kg
Copper Stop Sleeves		
025-125S	1/8" (3.175 mm), Stop Sleeve, 871-18-J	0.01 lb. 0.004 kg
025-187S	3/16" (4.76 mm), Stop Sleeve, 871-20-M	0.05 lb. 0.02 kg
025-250S	1/4" (6.35 mm), Stop Sleeve, 871-23-F6	0.06 lb. 0.03 kg
025-312S	5/16" (7.9 mm), Stop Sleeve, 871-26-F6	0.06 lb. 0.03 kg
025-375S	3/8" (9.5 mm), Stop Sleeve, 871-27-F6	0.06 lb. 0.03 kg
Tools		
025-51MJ	Crimping Tool for 1/8" (3.175 mm) Oval & Stop, 3/16" (4.76 mm) Stop Sleeves	6 lbs. 2.72 kg
025-51X850	Crimping Tool for 3/16" (4.76 mm) Oval Sleeves	6 lbs. 2.72 kg
025-3F6950	Crimping Tool for 1/4" (6.35 mm) Oval & Stop Sleeves	15 lbs. 6.8 kg
025-2930*	“Go Gauge” for Nicopress Sleeves & Selected Hand Tools	0.1 lb. 0.05 kg

*WHEN ORDERING A GAUGE SPECIFY THE TOOL NUMBER ON WHICH IT WILL BE USED.



Cable Clip
021-250C

- Forged Cable Clips, made in the USA.
- Used in conjunction with a thimble to form a loop at the termination of a cable.
- The efficiency rating of a properly prepared assembly is 80% of the catalog breaking strength of the wire rope.
- Clips are galvanized.
- Meets Performance Requirements of Federal Specification FF-C-450, Type 1, Class 1.

Ordering Information

Product Code	Description	Wt.
021-125C	1/8" (3.175 mm) Forged Cable Clip	0.1 lb. 0.05 kg
021-187C	3/16" (4.76 mm) Forged Cable Clip	0.1 lb. 0.05 kg
021-250C	1/4" (6.35 mm) Forged Cable Clip	0.2 lb. 0.09 kg
021-312C	5/16" (7.9 mm) Forged Cable Clip	0.3 lb. 0.13 kg
021-375C	3/8" (9.5 mm) Forged Cable Clip	0.5 lb. 0.23 kg



Galvanized Thimble 023-250C

- Used to form an eye at the end of a wire rope to prevent deformation and damage to the wire rope.
- Thimbles are galvanized.

Ordering Information

Product Code	Description	Wt.
023-125C	1/8" (3.175 mm), Galvanized Cable Thimble	0.04 lb. 0.012 kg
023-187C	3/16" (4.76 mm), Galvanized Cable Thimble	0.04 lb. 0.012 kg
023-250C	1/4" (6.35 mm), Galvanized Cable Thimble	0.04 lb. 0.012 kg
023-312C	5/16" (7.9 mm), Galvanized Cable Thimble	0.04 lb. 0.012 kg
023-375C	3/8" (9.5 mm), Galvanized Cable Thimble	0.08 lb. 0.04 kg



SureGrip Synthetic Rope
028-750SG

- The **only** theatrical rope with a wear indicator telling you when the rope needs replacing.
- The perfect replacement for manila and other ropes used backstage.
- Conventional, three-strand construction for a familiar feel and strong grip.
- Minimal stretch for easy use.
- Length does not change with temperature or humidity, so floor block readjustment is not necessary.
- Breaking strength for $\frac{3}{4}$ " (19 mm) SureGrip is 10,000 lbs. (4,535 kg), more than twice the strength of manila rope.
- Tracer tape with manufacturer's name, contact information, and year manufactured.
- Sold in 600' (183 m) and 1200' (366 m) rolls.
- US Patent 7,461,500.

Ordering Information

Product Code	Description	RWL	Wt.
028-750SG	$\frac{3}{4}$ " (19 mm) Diameter SureGrip	1050 lbs. 476 kg	0.13 lb./ft. 0.19 kg/m
028-B750SG	$\frac{3}{4}$ " (19 mm) Diameter SureGrip, Black	1050 lbs. 476 kg	0.13 lb./ft. 0.19 kg/m

RWL is based on manufacturer's 10:1 safety factor.



Multiline II Synthetic Rope
028-625M

- A popular replacement for manila and other ropes used backstage.
- Conventional, three-strand construction for a familiar feel and strong grip.
- Minimal stretch for easy use.
- Length does not change with temperature or humidity, so floor block readjustment is not necessary.
- Breaking strength is more than twice that of manila rope.
- Sold in 600' (183 m) and 1200' (366 m) rolls.
- Other sizes and colors available on special order.
- For 3/4" (19 mm) rope use SureGrip®.

Ordering Information

Product Code	Description	RWL	Wt.
028-625M	5/8" (15.9 mm) Diameter Multiline II	823 lbs. 373 kg	0.10 lb./ft. 0.13 kg/m
028-B625M	5/8" (15.9 mm) Diameter Multiline II, Black	823 lbs. 373 kg	0.10 lb./ft. 0.13 kg/m
028-875M	7/8" (22.2 mm) Diameter Multiline II	1550 lbs. 703 kg	0.18 lb./ft. 0.59 kg/m
028-1000M	1" (25.4 mm) Diameter Multiline II	1870 lbs. 848 kg	0.22 lb./ft. 0.72 kg/m

RWL is based on manufacturer's 10:1 safety factor.



Stage-Set X Synthetic Rope
028-750X

- A premium, high-strength replacement for manila and other ropes used backstage.
- Constructed with a parallel core of polyester fiber, wrapped in polyester tape and covered by a soft, braided polyester jacket.
- Minimal stretch for easy use.
- Non-rotating for spot lines.
- Length does not change with temperature or humidity, so floor block readjustment is not necessary.
- Breaking strength is more than 3 times that of manila rope.
- Sold in 600' (183 m) and 1200' (366 m) rolls.
- Other sizes and colors available on special order.

Ordering Information

Product Code	Description	RWL	Wt.
028-625X	5/8" (15.9 mm) Diameter Stage-Set X	1250 lbs. 567 kg	0.11 lb./ft. 0.164 kg/m
028-B625X	5/8" (15.9 mm) Diameter Stage-Set X, Black	1250 lbs. 567 kg	0.11 lb./ft. 0.164 kg/m
028-750X	3/4" (19 mm) Diameter Stage-Set X	1670 lbs. 757 kg	0.15 lb./ft. 0.19 kg/m
028-B750X	3/4" (19 mm) Diameter Stage-Set X, Black	1670 lbs. 757 kg	0.15 lb./ft. 0.19 kg/m
028-875X	7/8" (22.2 mm) Diameter Stage-Set X	2300 lbs. 1043 kg	0.22 lb./ft. 0.33 kg/m
028-1000X	1" (25.4 mm) Diameter Stage-Set X	3160 lbs. 1433 kg	0.27 lb./ft. 0.4 kg/m

RWL is based on manufacturer's 10:1 safety factor.



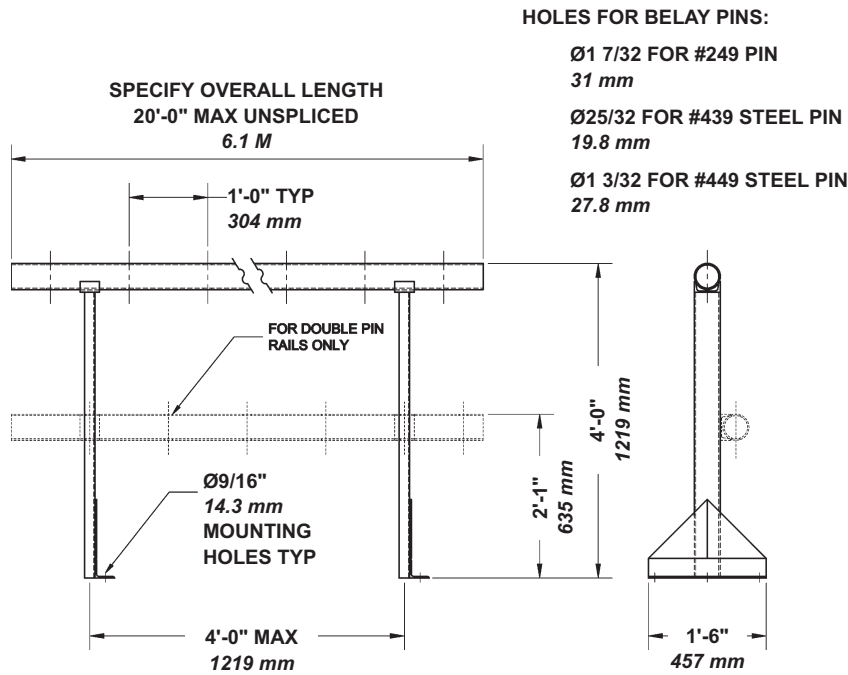
**Pin Rail with Belaying Pins
and Sand Bag**
015-520R

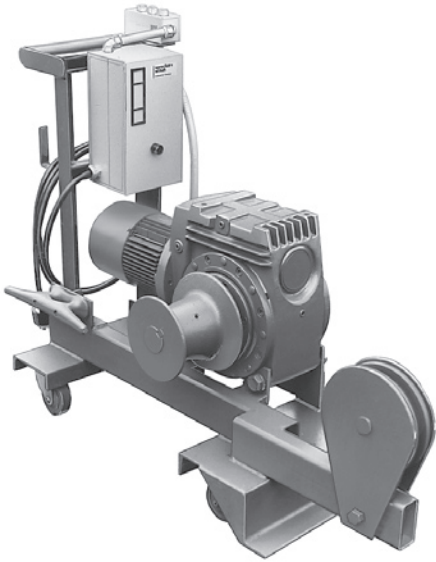
- Pin rails are designed to allow the user to insert belaying pins to tie-off rope rigging.
- The pin rail is made of 3 1/2" (88.9 mm) pipe with holes for belaying pins on 12" (305 mm) centers supported by 4" (102 mm) channel legs.
- Double pin rails have two pipes so that non-moving pieces may be tied off to one pipe and the other used for the active sets. Also for double trims.
- Wood and steel belaying pins are available.
- Sand bags may be used to counterbalance the load. Sand bags are made from ballistic nylon, with a forged safety hook, and Velcro™ closure. Dry sand (not supplied) can be added or removed to accurately balance a load.

Ordering Information

Product Code	Description	Wt.
Pin Rails		
015-520R	Single Pin Rail	25 lbs./ft. 37 kg/m
015-520D	Double Pin Rail	45 lbs./ft. 66.9 kg/m
Belaying Pins		
015-249	21" (533 mm) Wooden Belaying Pin, 1 5/32" (29.37 mm) Diameter	1 lb./ea. 0.45 kg/ea.
015-439	Steel Belaying Pin, 3/4" (19 mm) Diameter	2 lbs./ea. 0.9 kg/ea.
015-449	Steel Belaying Pin, 1 1/16" (29.3 mm) Diameter	2.2 lbs./ea. 1 kg/ea.
Sand Bags		
015-2596	25 lb. (11.3 kg) Sand Bag	1 lb./ea. 0.45 kg/ea.
015-5096	50 lb. (22.6 kg) Sand Bag	1 lb./ea. 0.45 kg/ea.
015-10096	100 lb. (45.3 kg) Sand Bag	2 lbs./ea. 0.9 kg/ea.
015-15096	150 lb. (68 kg) Sand Bag	2 lbs./ea. 0.9 kg/ea.

Dimensions





Mobile Capstan Hoist
018-416

- Mobile capstan hoists are used to pull out-of-balance counterweight arbors down for loading.
- Fully self contained, the hoist has an integral motor, brake, capstan drum, starter, and controls.
- Foot switch allows use of both hands to manage the hauling line.
- The base has fixed and swivel casters for easy positioning, and a front lip to engage a reaction bar in the locking rail or floor. Reaction rail provided separately.
- Hoists include 150' (45.75 m) of $\frac{3}{4}$ " (19 mm) SureGrip® rope with a forged safety hook.
- Supplied with 40' (12 m) of power cord with NEMA connector, mating receptacle, and junction box.

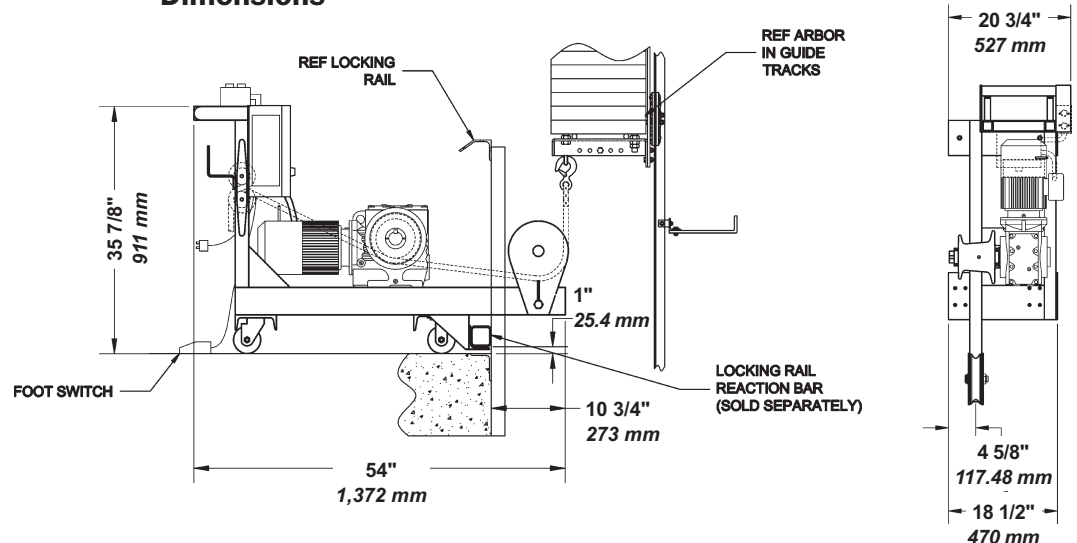
Power Requirements

Model	Voltage	Full Load Amps
3 Phase 60 Hz	208	6.3
3 Phase 60 Hz	230	5.7
3 Phase 60 Hz	460	2.85
3 Phase 50 Hz	380	3.3

Ordering Information

Product Code	Description	Wt.
018-416	Mobile Capstan Hoist 1500 lbs. (680 kg), 35 fpm (0.178 m/s)	400 lbs. 181 kg

Dimensions





Heavy Duty Traveler Track
024-280

- 14 gauge (1.89 mm) galvanized steel box track in 20' (6.1 m) sections.
- Manual or motorized operation.
- Can be used for bi-parting (traveler) or one way operation.
- Choice of several carrier wheel/body types.
- Carriers for heavy duty track have ball bearings.
- Carriers equipped with swivel and trim chain (chain on 280 tracks only) for hanging curtain.
- Carriers for heavy duty track have rubber bumpers to reduce noise.
- Optional back packing operation eliminates on stage bunching while opening.
- Tracks are supplied complete with all necessary accessories (CWANA), including master carriers, one individual carrier per foot, live and dead-end pulleys, end stops, hanging clamps, operating line, and adjustable floor pulley.

Ordering Information

Product Code	Carrier Material: Wheel/Body	End Pulley Diameter	Floor Pulley Diameter	Operating Line Diameter	Wt.
Heavy Duty Stage Tracks — 2 5/8"W x 2 3/4"H (66.675 mm x 69.85 mm) Steel Channel					
024-280	Polyethylene/Nylon	3 1/4" 83 mm	3 1/4" 83 mm	3/8" 9.5 mm	4 lbs./ft. 5.9 kg/m
024-281	Neoprene/Steel	3 1/4" 83 mm	3 1/4" 83 mm	3/8" 9.5 mm	4.5 lbs./ft. 6.7 kg/m
024-282	Nylon/Steel	5" 127 mm	5" 127 mm	3/8" 9.5 mm	4.5 lbs./ft. 6.7 kg/m
024-283R	Neoprene/Steel	8" 203 mm	8" 203 mm	1/2" 12.7 mm	5 lbs./ft. 7.4 kg/m
024-283N	Nylon/Steel	8" 203 mm	8" 203 mm	1/2" 12.7 mm	5 lbs./ft. 7.4 kg/m
Medium Duty Stage Tracks — 1 3/4"W x 2"H (44.45 mm x 50.8 mm) Steel Channel					
024-170	Polyethylene/Steel	1 13/16" 46 mm	3 1/4" 83 mm	1/4" 6.35 mm	3 lbs./ft. 4.45 kg/m
024-171N	Nylon/Steel	1 13/16" 46 mm	3 1/4" 83 mm	1/4" 6.35 mm	4 lbs./ft. 5.9 kg/m
024-171R	Neoprene/Steel	1 13/16" 46 mm	3 1/4" 83 mm	1/4" 6.35 mm	4 lbs./ft. 5.9 kg/m
024-172	Polyethylene/Steel	2 1/4" 57 mm	3 1/4" 83 mm	5/16" 7.9 mm	4 lbs./ft. 5.9 kg/m

Contact J.R. Clancy for additional models and data.