



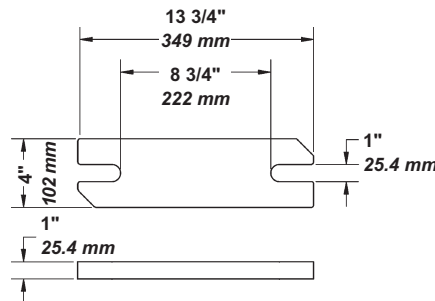
**Counterweight  
009-4X1**

- Used in arbors to counterbalance the weight of the batten and scenery or lights.
- Weights are flame-cut steel.
- Opposite corners have 45° notches to provide finger grips.
- 13 3/4" (349.25 mm) length, with slotted ends for 3/4" (19 mm) diameter arbor rods spaced on 10" (254 mm) centers.
- Sold in 1000 lb. (454 kg) pallets.
- Actual weight can vary by ± 20% from the nominal weight.

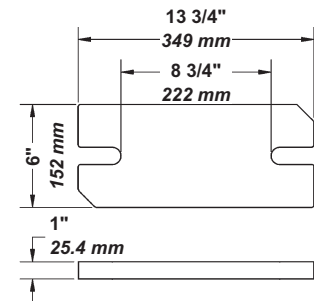
## Ordering Information

Product Code	Width	Nominal Thickness	Nominal Weight
009-4X1	4" 102 mm	1" 25.4 mm	14 lbs. 6.3 kg
009-4X2	4" 102 mm	2" 50.8 mm	28 lbs. 12.7 kg
009-6X1	6" 152 mm	1" 25.4 mm	22 lbs. 10 kg
009-6X2	6" 152 mm	2" 50.8 mm	43 lbs. 19.5 kg

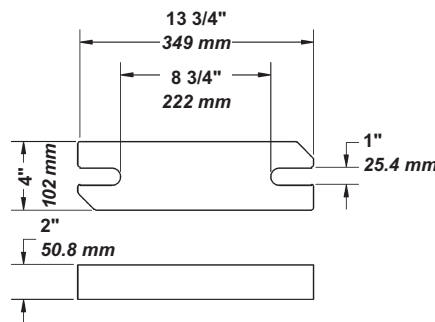
## Dimensions



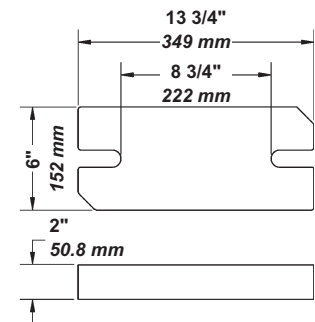
#009-4X1



#009-6X1



#009-4X2



#009-6X2