



**Underhung Head Block  
1CS-61259R**

- Underhung style, normally supported by two structural I-beams.
- ASTM Class 30 grey iron or nylon sheave.
- Equal pitch diameter on rope and cable grooves for smooth operation.
- Tapered roller bearings.
- Base angle legs turned in to allow close mounting centers.
- 10 gauge (3.41 mm) side plates fully enclose sheave; 16" (406 mm) blocks have 7 gauge (4.55 mm) side plates.
- Side plates are bolted and welded to the base angles for extra strength.
- Six spacers between the side plates, three prevent cables from escaping the sheave grooves.
- Base angles punched with a hole pattern for easy installations.
- Mounting clips available, please provide steel dimensions.
- **Underhung blocks may need to be welded to head beams after final alignment.** Clip angles are recommended for double beam mounting. Mounting with clips or to single beams will require welding. Consult the factory for specific information.

**Ordering Information**

Sheave Dia.	Rope Dia.	Lines	Bearings	Cast Iron Prod. Code	RWL	Wt.	Nylon Prod. Code	RWL	Wt.
8" 203 mm	3/4" 19 mm	6 @ 1/4" 6.35 mm	1" 25.4 mm	1CS-60859R	1300 lbs. 590 kg	46 lbs. 20.9 kg	-	-	-
8" 203 mm	3/4" 19 mm	8 @ 1/4" 6.35 mm	1" 25.4 mm	1CS-80859R	1300 lbs. 590 kg	52 lbs. 23.6 kg	-	-	-
12" 305 mm	3/4" 19 mm	6 @ 1/4" 6.35 mm	1" 25.4 mm	1CS-61259R	3000 lbs. 1361 kg	72 lbs. 32.6 kg	1NS-61259R	3000 lbs. 1361 kg	40 lbs. 18.1 kg
12" 305 mm	3/4" 19 mm	8 @ 1/4" 6.35 mm	1" 25.4 mm	1CS-81259R	3000 lbs. 1361 kg	79 lbs. 35.8 kg	1NS-81259R	3000 lbs. 1361 kg	41 lbs. 18.6 kg
12" 305 mm	3/4" 19 mm	10 @ 1/4" 6.35 mm	1" 25.4 mm	1CS-101259	3000 lbs. 1361 kg	86 lbs. 39 kg	-	-	-
16" 406 mm	1" 25.4 mm	6 @ 3/8" 9.5 mm	1 1/2" 38 mm	1CS-61659R	3600 lbs. 1633 kg	139 lbs. 63 kg	-	-	-
16" 406 mm	1" 25.4 mm	8 @ 3/8" 9.5 mm	1 1/2" 38 mm	1CS-81659R	3600 lbs. 1633 kg	147 lbs. 66.7 kg	-	-	-

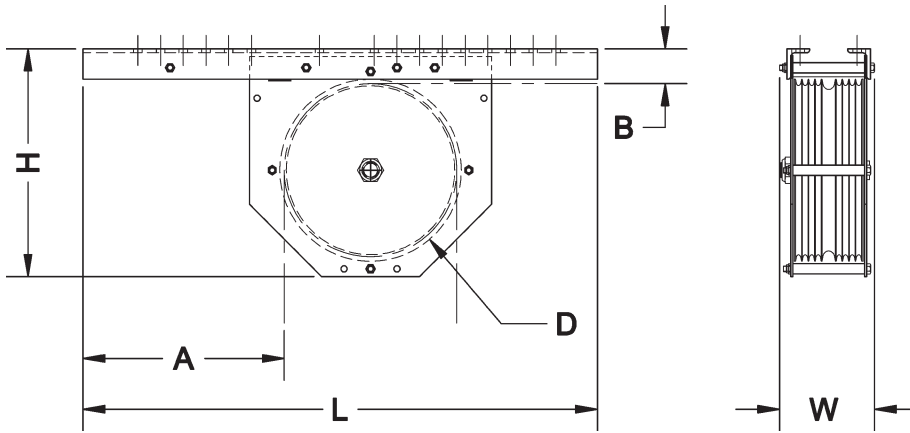
**Double Purchase:** Change "S" to "D" in the part number for double purchase head blocks. Consult Factory for RWL on double purchase blocks.

**Wire Guide Blocks:** Change the "R" suffix to "W" in the part number for blocks with tieoffs for arbor wire guides.

**Tieoffs:** Tieoffs for wire guided clews are also available.

**RWL:** RWL is maximum load that can be applied to a block which is in "like new" condition and has been properly installed, maintained, and operated.

Dimensions



Nominal Sheave Diam.	Lines	Dim. L	Dim. H	Dim. W	Dim. A	Dim. B	Dim. D (Sheave Diam.)
8" 203 mm	6	32" 813 mm	11 <sup>7</sup> / <sub>16</sub> " 290.5 mm	5 <sup>3</sup> / <sub>8</sub> " 137 mm	15 <sup>1</sup> / <sub>16</sub> " 383 mm	2 <sup>3</sup> / <sub>16</sub> " 11 mm	8 <sup>1</sup> / <sub>2</sub> " 216 mm
8" 203 mm	8	32" 813 mm	11 <sup>7</sup> / <sub>16</sub> " 290.5 mm	6 <sup>3</sup> / <sub>8</sub> " 162 mm	15 <sup>1</sup> / <sub>16</sub> " 383 mm	2 <sup>3</sup> / <sub>16</sub> " 11 mm	8 <sup>1</sup> / <sub>2</sub> " 216 mm
12" 305 mm	6	34" 864 mm	15" 381 mm	5 <sup>3</sup> / <sub>8</sub> " 137 mm	13 <sup>5</sup> / <sub>16</sub> " 338 mm	2 <sup>3</sup> / <sub>16</sub> " 11 mm	12" 305 mm
12" 305 mm	8	34" 864 mm	15" 381 mm	6 <sup>3</sup> / <sub>8</sub> " 162 mm	13 <sup>5</sup> / <sub>16</sub> " 338 mm	2 <sup>3</sup> / <sub>16</sub> " 11 mm	12" 305 mm
12" 305 mm	10	34" 864 mm	15" 381 mm	7 <sup>1</sup> / <sub>4</sub> " 184 mm	13 <sup>5</sup> / <sub>16</sub> " 338 mm	2 <sup>3</sup> / <sub>16</sub> " 11 mm	12" 305 mm
16" 406 mm	6*	34" 864 mm	19" 483 mm	6 <sup>5</sup> / <sub>8</sub> " 168 mm	11 <sup>7</sup> / <sub>16</sub> " 290.5 mm	2 <sup>3</sup> / <sub>16</sub> " 11 mm	16" 406 mm
16" 406 mm	8*	34" 864 mm	19" 483 mm	7 <sup>5</sup> / <sub>8</sub> " 194 mm	11 <sup>7</sup> / <sub>16</sub> " 290.5 mm	2 <sup>3</sup> / <sub>16</sub> " 11 mm	16" 406 mm

\*STANDARD 16" (406 mm) SHEAVE GROOVING IS FOR 3/8" (9.5 mm) CABLE AND 1" (25.4 mm) ROPE. 1/4" (6.35 mm) CABLE AND 3/4" (19 mm) ROPE ARE AVAILABLE.