



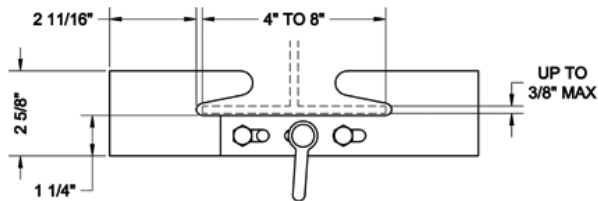
**Beam Clamp**  
**015-698**

- Used for attaching chains or lines to beams for dead hanging or guide wires.
- Includes two  $\frac{3}{8}$ " x 1" Grade 5 hex bolts with lock nuts, and a  $\frac{1}{4}$ " round pin anchor shackle.

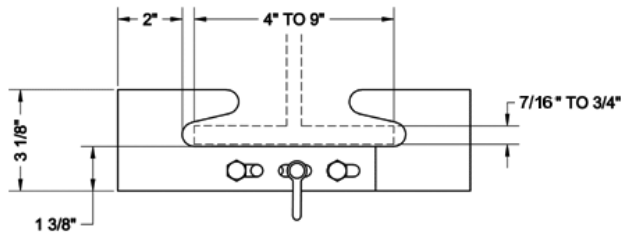
### Ordering Information

Product Code	Description	RWL	Wt.
015-698	$\frac{3}{8}$ " throat, will grip flanges from 4" to 8"	350 lbs.	2 lbs.
015-798	$\frac{3}{4}$ " throat, will grip flanges from 4" to 9"	350 lbs.	2 lbs.

### Dimensions



**#698 BEAM CLAMP**



**#798 BEAM CLAMP**