

Upright Head Block
1CS-81255R

- Upright style, normally supported by two structural I-beams.
- ASTM Class 30 grey iron or nylon sheave.
- Equal pitch diameter on rope and cable grooves for smooth operation.
- Tapered roller bearings.
- Base angle legs turned in to allow close mounting centers. Notches allow clear passage of all cables.
- 10 gauge side plates fully enclose sheave; 16" blocks have 7 gauge side plates.
- Side plates are bolted and welded to the base angles for extra strength.
- Six spacers between the side plates, three prevent cables from escaping the sheave grooves.
- Base angles punched with a hole pattern for easy installations.
- Mounting clips are available, please provide steel dimensions.

Ordering Information

Sheave Dia.	Rope Dia.	Lines	Bearings	Cast Iron Prod. Code	RWL	Wt.	Nylon Prod. Code	RWL	Wt.
8"	3/4"	6 @ 1/4"	1"	1CS-60855R	1300 lbs.	46 lbs.	-	-	-
8"	3/4"	8 @ 1/4"	1"	1CS-80855R	1300 lbs.	52 lbs.	-	-	-
12"	3/4"	6 @ 1/4"	1"	1CS-61255R	3000 lbs.	72 lbs.	1NS-61255R	3000 lbs.	40 lbs.
12"	3/4"	8 @ 1/4"	1"	1CS-81255R	3000 lbs.	79 lbs.	1NS-81255R	3000 lbs.	41 lbs.
12"	3/4"	10 @ 1/4"	1"	1CS-101255	3000 lbs.	86 lbs.	-	-	-
16"	1"	6 @ 3/8"	1 1/2"	1CS-61655R	3600 lbs.	139 lbs.	-	-	-
16"	1"	8 @ 3/8"	1 1/2"	1CS-81655R	3600 lbs.	147 lbs.	-	-	-

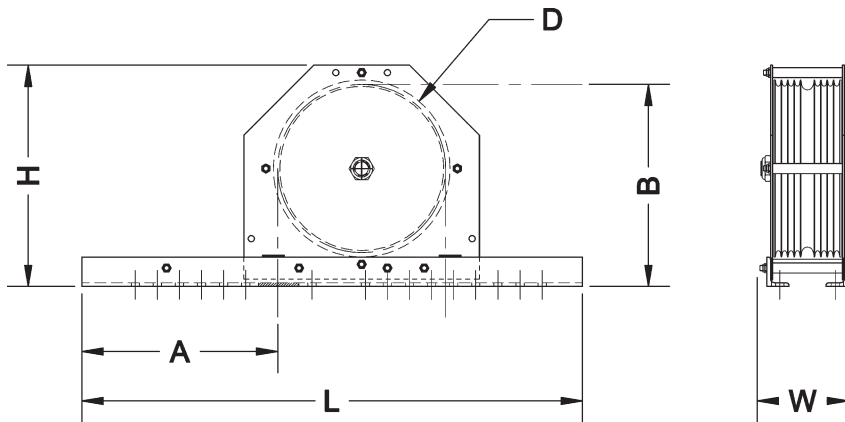
Double Purchase: Change "S" to "D" in the part number for double purchase head blocks.

Wire Guide Blocks: Change the "R" suffix to "W" in the part number for blocks with tieoffs for arbor wire guides.

Tieoffs: Tieoffs for wire guided clews are also available.

RWL: RWL is maximum load that can be applied to a block which is in "like new" condition and has been properly installed, maintained and operated.

Dimensions



Nominal Sheave Diam.	Lines	Dim. L	Dim. H	Dim. W	Dim. A	Dim. B	Dim. D (Sheave Diam.)
8"	6	32"	117/16"	5 3/8"	15 1/16"	10 1/8"	8 1/2"
8"	8	32"	117/16"	6 3/8"	15 1/16"	10 1/8"	8 1/2"
12"	6	34"	15"	5 3/8"	13 5/16"	13 3/4"	12"
12"	8	34"	15"	6 3/8"	13 5/16"	13 3/4"	12"
12"	10	34"	15"	7 1/4"	13 5/16"	13 3/4"	12"
16"	6*	34"	19"	6 5/8"	11 7/16"	17 11/16"	16"
16"	8*	34"	19"	7 5/8"	11 7/16"	17 11/16"	16"

*STANDARD 16" SHEAVE GROOVING IS FOR 3/8" CABLE AND 1" ROPE, 1/4" CABLE AND 3/4" ROPE ARE AVAILABLE.