



**SureLock
010-600R**

US Patent 7,165,295

- Will not open if the set is more than 50 lbs. out of balance, preventing rigging “runaways”.
- Indicates if the set is balanced, batten heavy or arbor heavy.
- One piece ASTM A536 ductile iron body.
- 10" handle, powder coated ductile iron, contoured for comfort and ease of use.
- Two iron cams grip rope with socket head adjustment screw for 5/8" – 1" rope. Adjustment screw has a nylon tip for quiet operation.
- Integral ears for optional padlock.
- Vinyl coated steel oval locking ring.
- May be used on 6" centers or more.
- For use in new projects or as an upgrade to existing rigging systems.
- Rubber bumper to quiet handle when it is opened.

Please Note:

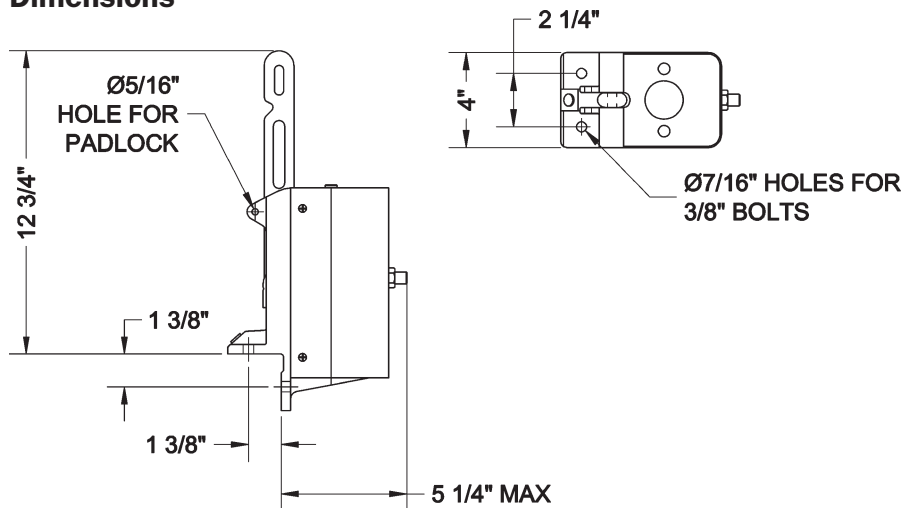
Rope locks are not designed to hold an imbalance of more than 50 lbs., nor as a speed control.

Ordering Information

Product Code	Description	RWL	Wt.
010-600R	Rope Lock	150 lbs.	20 lbs.
010-PLOCK	Padlock for Rope Lock	–	1 lb.
010-533C	Replacement Oval Ring, Vinyl Coated	–	0.1 lb.

RWL: RWL is maximum load that can be applied to the rope lock which is in "like new" condition and has been properly installed, maintained and operated.

Dimensions



Design, Manufacture and Installation of Theatrical Equipment Worldwide
 7041 Interstate Island Road ■ Syracuse, New York USA 13209-9713
 315-451-3440 ■ 1-800-836-1885 ■ Fax: 315-451-1766 ■ www.jrclancy.com
 © J.R. Clancy 2010

